

NCRTL B Newsletter

Haere mai, Kia Orana, Talofa lava, Malo e lelei, Fakaalofa lahi atu and welcome to the fourth edition of our team newsletter!



Term 4 2016

Initiatives for 2017

Incredible Years Teachers + Refresher

Research based behaviour management strategies for teachers teaching 8 years old and younger
alice.ncrtlb@gmail.com

Positive Behaviour for Learning

North Canterbury delivered SWPB4L. PLD and support to implement evidenced based framework across you school.
ncrtlb@gmail.com

Provisionally Certificated Teacher's COP

Six meetings over the year that support PCTs connect and develop skills to support diverse learners
louise@ncrtlb@gmail.com

Teacher Aide Professional Learning

An opportunity for TAs to network and engage in professional learning to support their diverse roles
jocelyn.ncrtlb@gmail.com

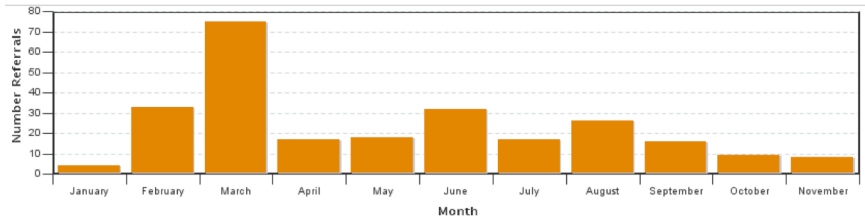


General Update

RTL B mahi takes many different forms. Working to support individual students is the most common. However, this year we have seen a continued increase in requests for support for groups of students, classes, syndicates and teachers, systems work and even across schools. We have also provided support through IYT, Provisionally Certificated Teacher's COP, Teacher Aide PLD, SENCO network meetings and parent information sessions. I want to formally thank the RTL B team for all the hard work, commitment and professionalism they have shown over the year.

Below are just two graphs that reflect the hard work of the team. The first shows individual referrals supported and the second reflects total individual referrals allocated to date (255 referrals)

Referrals for All Schools 2016



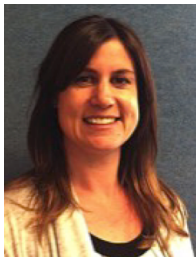
Referrals		Gender						Year											
Student	Teacher	M	F	Maori	Pasifika	Euro	Asian	Other	1	2	3	4	5	6	7	8	9	10	11
		226	6	180	52	38	0	175	1	18	40	39	31	30	22	16	12	18	17

A warm welcome to Silvia Magerl who has joined the North Canterbury RTL B Team and will be based at Kaiapoi North School



Looking Ahead to 2017

It is with great sadness that we will farewell Kat Kevey this term. Kat has been part of the RTL B team since term 4 2015 and has decided to follow her passion for personal training. Kat has brought such a wealth of knowledge and skill to the team and will be sadly missed. We wish her all the best.



They say the only constant in education is change and it seems we are certainly in that space at the moment. As an RTL B cluster we

want to be doing all we can to support teachers to provide learning opportunities in high quality inclusive environments. One barrier to achieving this is that teachers see an RTL B referral as a sign that they are failing (competence) as opposed to an opportunity for some collaborative problem solving and professional growth. We are on a mission to change this mindset and from this point referrals will be called *Requests for Support*. We would like you to consider requests for support around individual students to include all the teachers in that collaborative learning space (if possible). Please remember that you can make requests for support for teachers, groups of teachers, classes, syndicates, school systems, supporting teachers/TAs with

implementing assistive technology, bilingual assessments. We are also offering parent education. Learning environments and teaching practice are currently in a state of rapid change. We are all working hard to get our heads around the tremendous possibilities of education in the future while still hanging on to the important instructional practice and positive behaviour management. We don't see ourselves as the experts, but we can walk alongside teachers offering support and expertise.

Finally 2017 will see an upgrade in our CMS system. Just in case information goes missing with the change over, we would appreciate any requests for support being made in Jan/Feb next year.

Learning Support Update – MOE



The Ministry of Education has recently made announcements revealing more detail about Learning Support Update (formally the Special Education Update). As part of the Learning Support Update, the MOE plans to implement a new service model that will include:

1. A single point of entry for parents, schools and local communities.

2. Local learning support teams
3. A Lead Practitioner
4. The collection of individual student data related to learning and achievement.

There are also plans in consultation with the Ministries of Health and Social Developments to review ORS, Communication services and Behaviour services to improve flexibility and efficiency.

I currently don't have any further information about how this will impact on the RTL B service, but understand that the timeline for implementation is July 2017.

<http://www.education.govt.nz/ministry-of-education/information-releases/learning-support-previously-special-education-update-information-release/>



I

North Canterbury SWPBL Coaches Network Meetings 2017

During 2016 the NCRTL B trained facilitators supported seven schools to implement the SWPBL framework. Since 2012 six North Canterbury Schools have participated in the MOE delivered SWPB4L initiative. It is our intention to provide a forum for all these school coaches to come together to inspire each other, share ideas, analyse data and provide support for action planning.

This opportunity is for all schools that have completed the first year of implementation of Tier 1. It doesn't matter how far through the journey you are; you will all bring inspiration for each other. We will be meeting at Greta Valley School from 1- 3.30pm on the dates below. The NCRTL B service will even offer to cover the costs of teacher release (if this is an actual cost).

The dates are

22nd March, 10th May, 7th June, 2nd August, 30th August, 1st November.

Please email ncrtlb@gmail.com to let us know if you're keen and the contact details of your coach so we can get in touch with more details.

Remember the lessons from the dancing guy!



Incredible Years Teacher One Day Refresher Course

This is an opportunity for teachers to spend the day re-visiting the Incredible Years key theories and strategies. Perfect timing for setting up the classroom environment for 2017!

This is being held on 15 February 2017, Mainpower Oval, Rangiora, 9-4pm.

If you have teachers that are interested please ask them to contact Lynne Marwick lynne.ncrtlb@gmail.com and state in the email current year level, the year that they completed the IYT course and their school.

The RTL B service will contribute \$150 towards the cost of a Reliever. Morning tea and lunch provided.

Six ways to help Canterbury children worried about earthquakes

1. Retain routines; do what you normally do.
2. Turn media off, repetition of disaster scenes adds to anxiety.
3. Be calm and loving; and don't talk about your adult worries with your children.
4. Keep normal disciplinary boundaries - the world is unpredictable enough without the rules changing.
5. Give reassurance but don't overdo it. Too much reassurance means there is something to be worried about!
6. Let them talk about it, but don't let it take over, use distraction and play to get their minds off it.



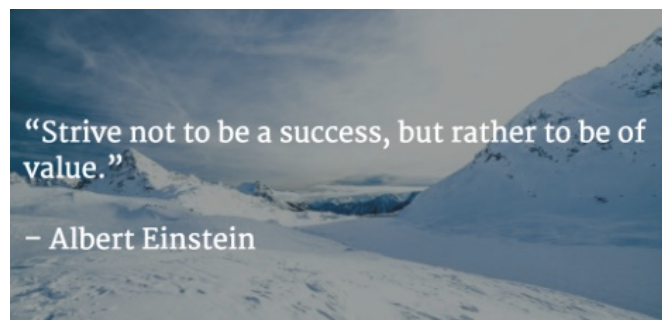
What a fantastic community we live in! Since the latest earthquakes, I have witnessed people finding opportunities to help people and communities affected. Support for parents, teachers, principals; contributions of food, mufti days to raise funds, teacher release are some examples. The RTL B service has partnered up with the School based mental health team to provide support wherever needed (no request for support required). We will continue to check in with schools and offer support in this way into 2017. Please feel free to contact me if you notice support is required.

Ngā mihi mahana ki a koutou
Kelly Watson – Cluster Manager



As part of the NCRTL B review process we are increasing the hourly rate for Learning Support Funding from \$18 to \$19 an hour. This is a contribution towards interventions collaboratively developed in 2017.

We would appreciate if you could please check the CMS to ensure all applications for LSF have been paid to your school.



NCRTL B Service

Kaiapoi North School
278 Williams Street
Kaiapoi 7630